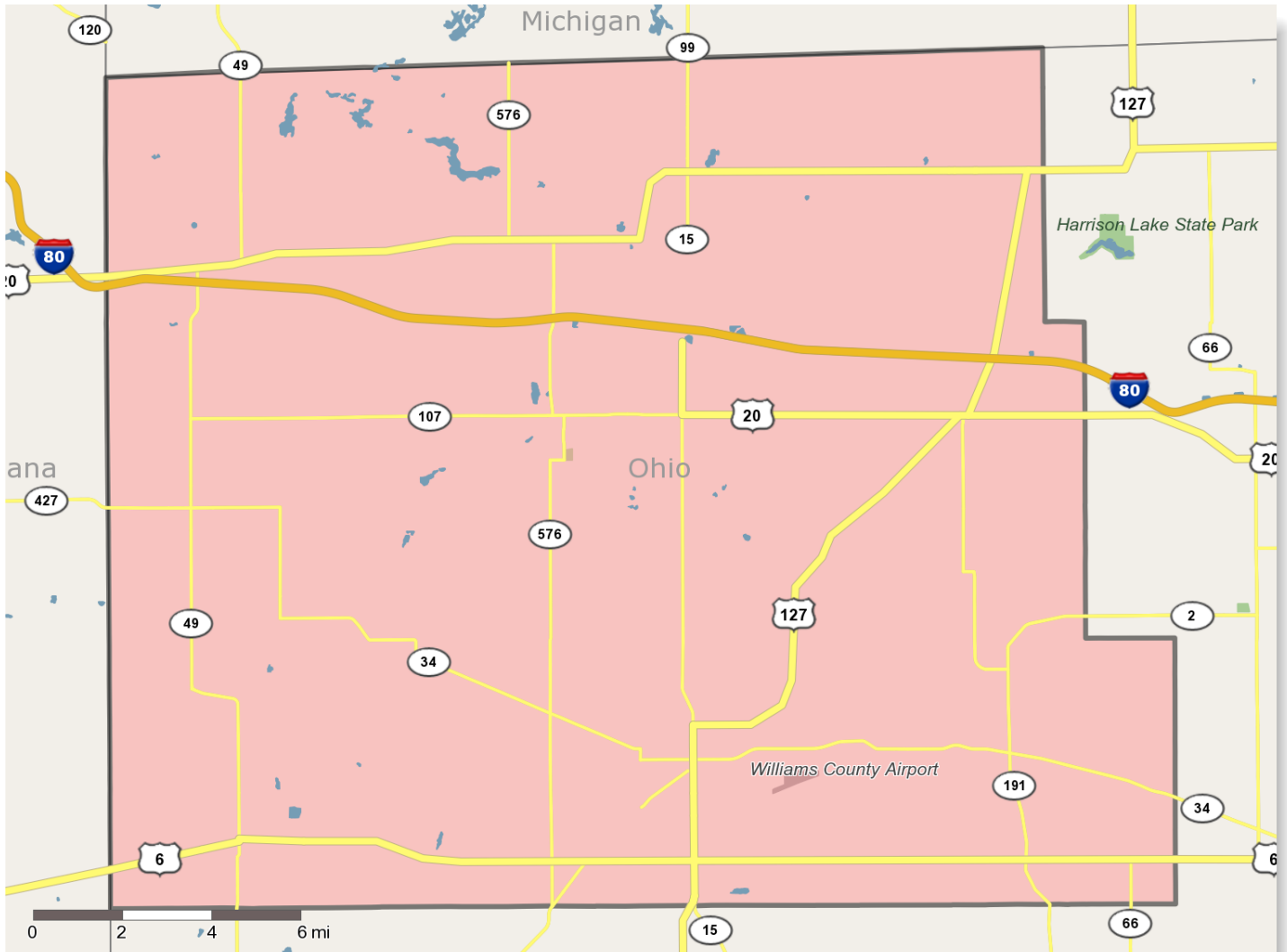


Your Custom Report

Geography: Williams County



Executive Summary Report with Charts

Geography: Williams County

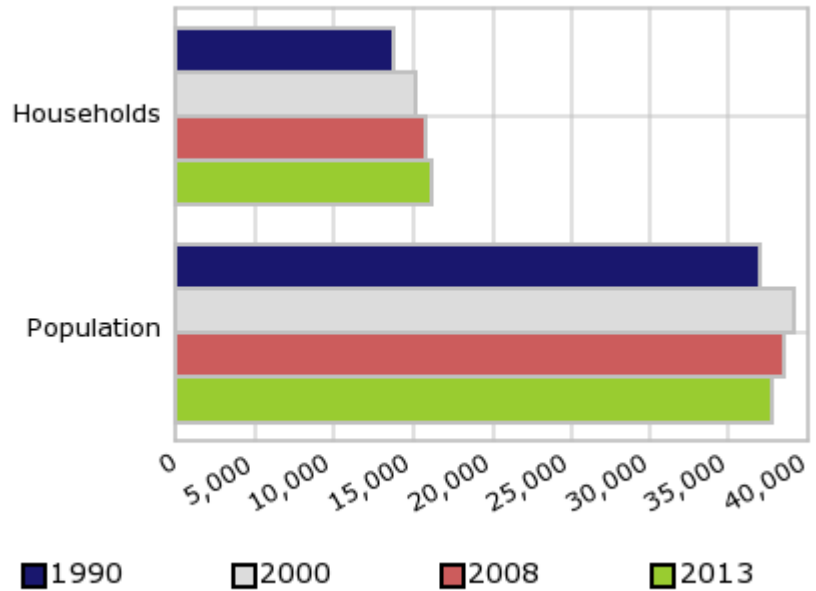
Date: June 17, 2009

Population Demographics:

Population and Household Change

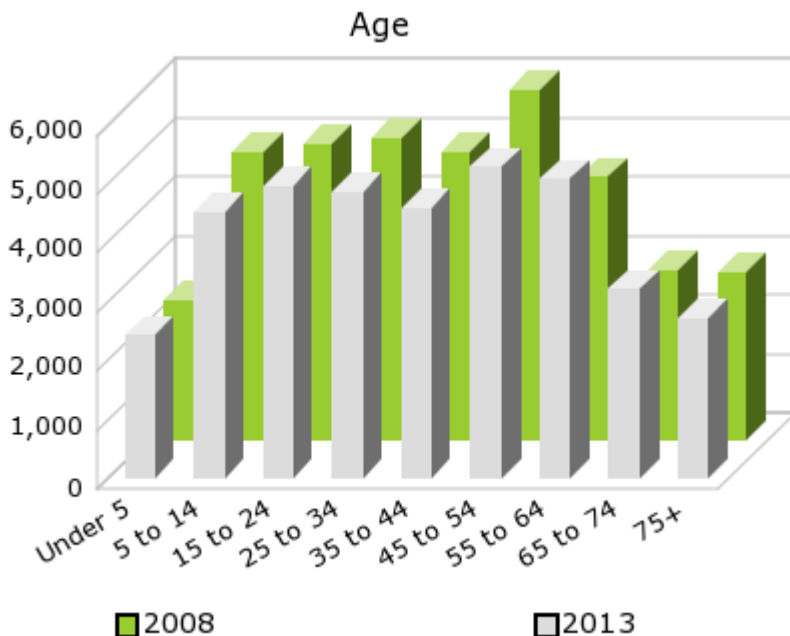
The number of households in the study area in 1990 was **13,807** and changed to **15,105** in 2000, representing a change of **9.4%**. The household count in 2008 was **15,898** and the household projection for 2013 is **16,269**, a change of **2.3%**.

The population in the study area in 1990 was **36,957** and in 2000 it was **39,189**, roughly a **6.0%** change. The population in 2008 was **38,373** and the projection for 2013 is **37,635** representing a change of **-1.9%**.



	1990 Census	2000 Census	2008 Estimate	2013 Projection	Percent Change	
					1990 to 2000	2008 to 2013
Total Population	36,957	39,189	38,373	37,635	6.0%	-1.9%
Total Households	13,807	15,105	15,898	16,269	9.4%	2.3%

Population by Age



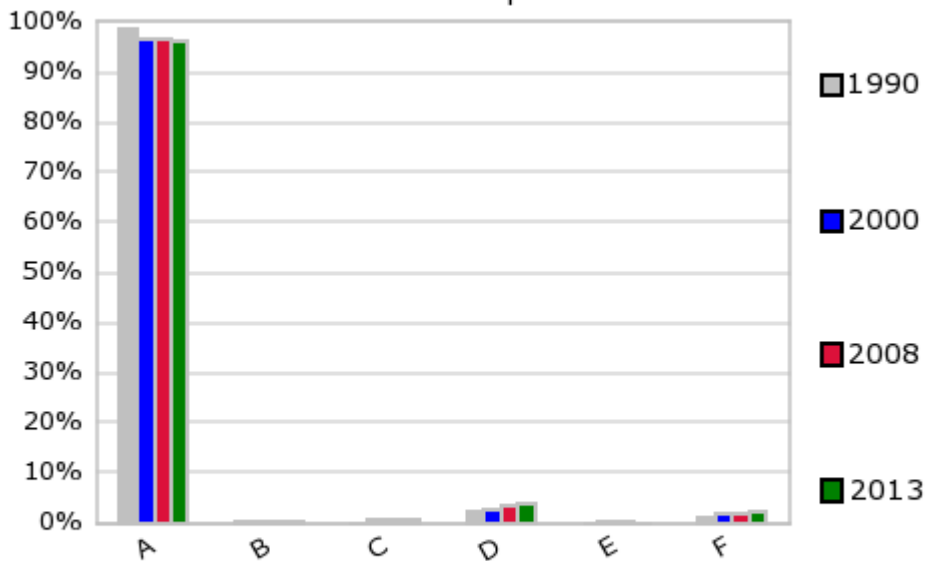
In 1990, the median age of the total population in the study area was **33.2**, and in 2000, it was **36.9**. The median age in 2008 is **38.9** and it is predicted to change in five years to **39.3** years. In 2008, females represented **50.0%** of the population with a median age of **40.5** and males represented **50.0%** of the population with a median age of **37.5** years. In 2008, the most prominent age group in this geography is **Age 45 to 54** years. The age group least represented in this geography is **0 to 4** years.

Age Groups

	1990		2000		2008		2013		Percent Change	
	Census	%	Census	%	Estimate	%	Projection	%	1990 to 2000	2008 to 2013
0 to 4	2,768	7.5%	2,515	6.4%	2,371	6.2%	2,438	6.5%	-9.1%	2.8%
5 to 14	5,984	16.2%	5,836	14.9%	4,876	12.7%	4,524	12.0%	-2.5%	-7.2%
15 to 19	2,674	7.2%	2,973	7.6%	2,594	6.8%	2,435	6.5%	11.2%	-6.1%
20 to 24	2,196	5.9%	2,208	5.6%	2,407	6.3%	2,501	6.6%	0.5%	3.9%
25 to 34	6,007	16.3%	4,949	12.6%	5,126	13.4%	4,858	12.9%	-17.6%	-5.2%
35 to 44	5,330	14.4%	6,290	16.1%	4,891	12.7%	4,595	12.2%	18.0%	-6.1%
45 to 54	3,814	10.3%	5,265	13.4%	5,926	15.4%	5,273	14.0%	38.0%	-11.0%
55 to 64	3,120	8.4%	3,714	9.5%	4,445	11.6%	5,074	13.5%	19.0%	14.2%
65 to 74	2,834	7.7%	2,684	6.9%	2,885	7.5%	3,221	8.6%	-5.3%	11.6%
75 +	2,229	6.0%	2,754	7.0%	2,850	7.4%	2,711	7.2%	23.6%	-4.9%

Population by Race/Ethnicity

Race and Ethnicity
Percent Composition



A: White
B: Asian Pac Islr
C: Black

D: Hispanic
E: Amer Indian or Alaska Native
F: Other or Multi Race

In 2008, the predominant race/ethnicity category in this study area is **White**. The race & ethnicity category least represented in this geography is **American Indian, Alaska Native**.

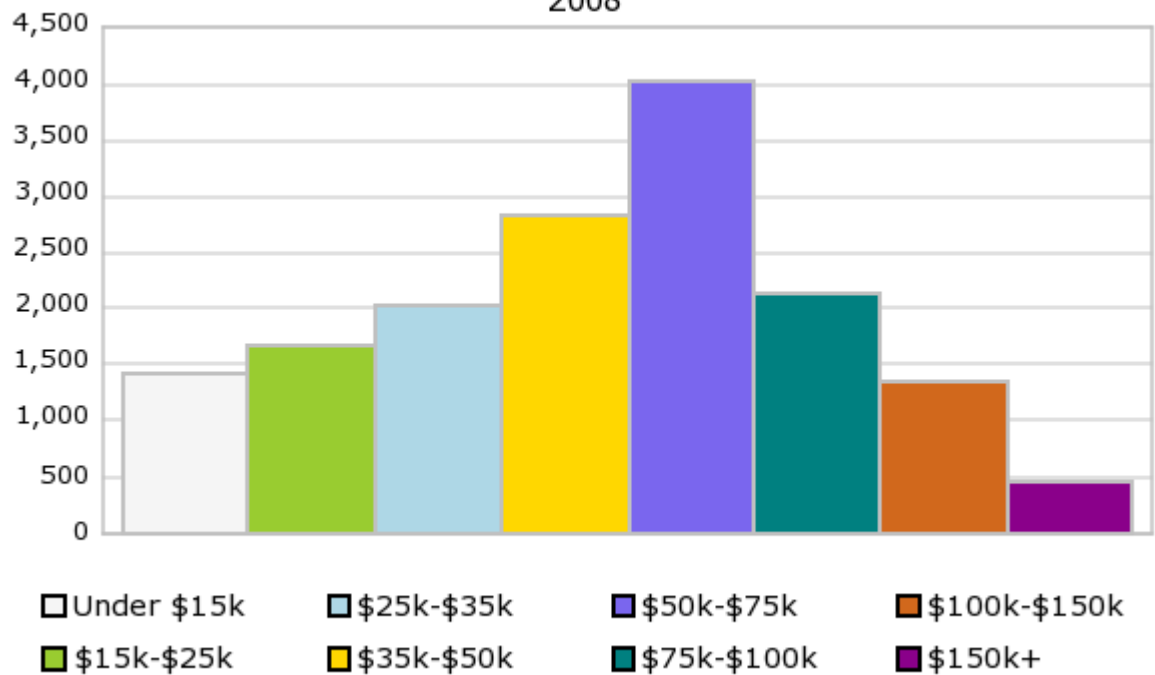
Race & Ethnicity

	1990		2000		2008		2013		Percent Change	
	Census	%	Census	%	Estimate	%	Projection	%	1990 to 2000	2008 to 2013
White	36,367	98.4%	37,822	96.5%	36,991	96.4%	36,236	96.3%	4.0%	-2.0%
Black	23	0.1%	283	0.7%	283	0.7%	287	0.8%	1,130.4%	1.4%
American Indian or Alaska Native	46	0.1%	89	0.2%	81	0.2%	71	0.2%	93.5%	-12.3%
Asian	127	0.3%	205	0.5%	210	0.5%	218	0.6%	61.4%	3.8%
Other Race	394	1.1%	466	1.2%	480	1.3%	559	1.5%	18.3%	16.5%
Two or More Races			324	0.8%	328	0.9%	264	0.7%		-19.5%
Hispanic Ethnicity	826	2.2%	1,049	2.7%	1,296	3.4%	1,472	3.9%	27.0%	13.6%
Not Hispanic or Latino	36,131	97.8%	38,140	97.3%	37,077	96.6%	36,163	96.1%	5.6%	-2.5%

Households by Income

Households by Income Group
2008

In 2008 the predominant household income category in this study area is **\$50K - \$75K**, and the income group that is least represented in this geography is **\$150K +**.



HH Income Categories											Percent Change	
	1990 Census	%	2000 Census	%	2008 Estimate	%	2013 Projection	%	1990 to 2000	2008 to 2013		
\$0 - \$15,000	2,991	21.7%	1,865	12.3%	1,414	8.9%	1,263	7.8%	-37.6%	-10.7%		
\$15,000 - \$24,999	2,794	20.2%	2,165	14.3%	1,684	10.6%	1,424	8.8%	-22.5%	-15.4%		
\$25,000 - \$34,999	2,844	20.6%	2,268	15.0%	2,022	12.7%	1,845	11.3%	-20.3%	-8.8%		
\$35,000 - \$49,999	3,034	22.0%	3,187	21.1%	2,836	17.8%	2,673	16.4%	5.0%	-5.7%		
\$50,000 - \$74,999	1,593	11.5%	3,559	23.6%	4,031	25.4%	4,085	25.1%	123.4%	1.3%		
\$75,000 - \$99,999	267	1.9%	1,359	9.0%	2,122	13.4%	2,436	15.0%	409.0%	14.8%		
\$100,000 - \$149,999	161	1.2%	470	3.1%	1,347	8.5%	1,908	11.7%	191.9%	41.6%		
\$150,000 +	108	0.8%	232	1.5%	442	2.8%	635	3.9%	114.8%	43.7%		
Average Hhld Income	\$33,183		\$46,898		\$54,626		\$59,973		41.3%	9.8%		
Median Hhld Income	\$28,356		\$40,849		\$49,963		\$55,204		44.1%	10.5%		
Per Capita Income	\$12,443		\$18,076		\$23,518		\$26,885		45.3%	14.3%		

(C) 2008 Applied Geographic Solutions, Inc. All Rights Reserved, SRC, LLC.

Material on this website is protected by copyright and trademark laws. The information contained in this website or linked sites is provided on an "as is" basis. We make no guarantee or representation about the accuracy or completeness of the information, and disclaim all warranties, express or implied, including but not limited to warranties of merchantability, fitness for a particular purpose and non-infringement. We are not responsible for any damages arising from the use of information on this site. It is your responsibility to independently investigate the information's accuracy and completeness, and to determine to your satisfaction the suitability of the property for your needs. Any projections, opinions, assumptions or estimates used are for example only and do not represent the current or future performance of any property.