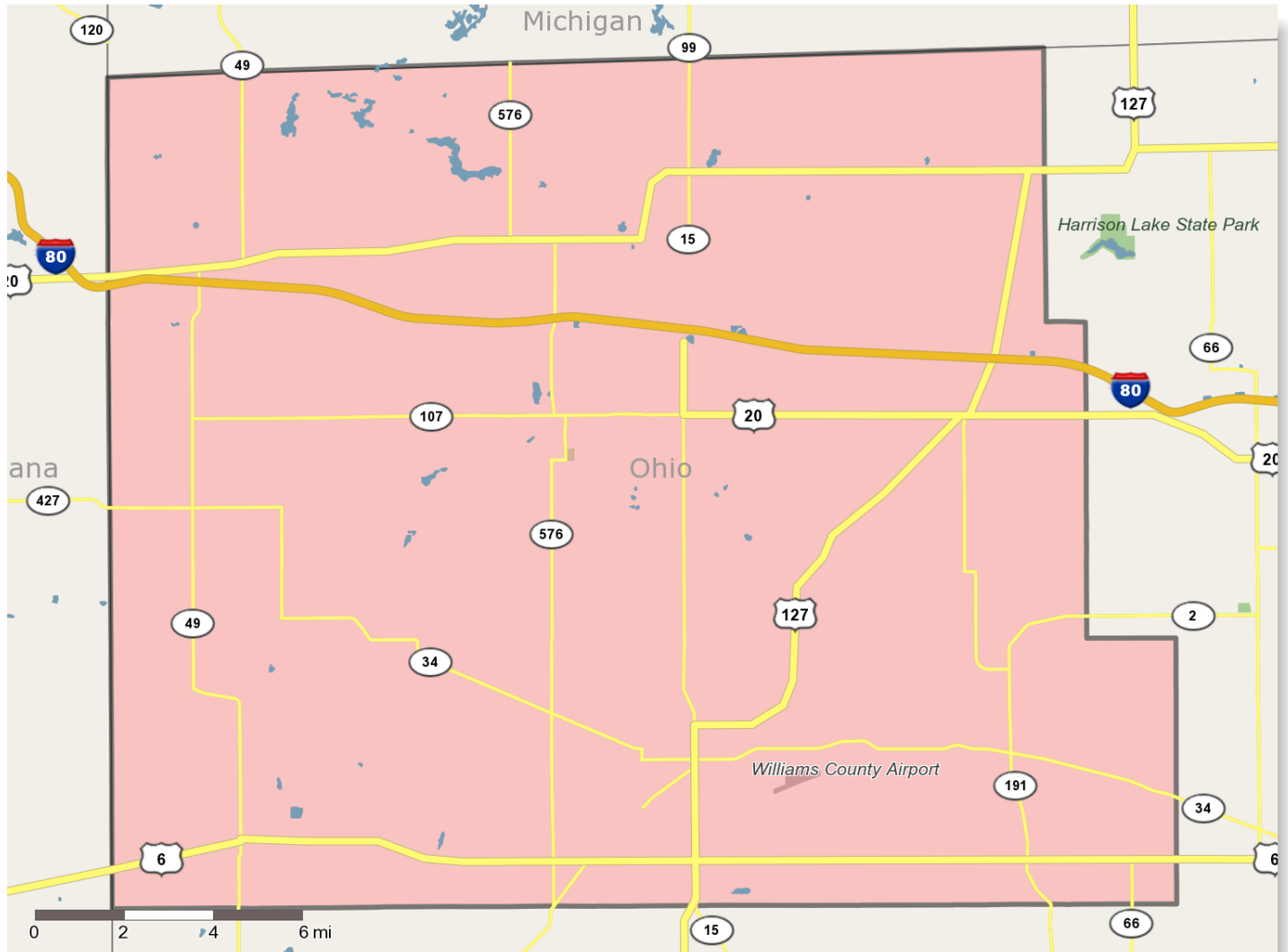


Your Custom Report

Geography: Williams County



Workforce Trend Summary

Geography: Williams County

Date: June 17, 2009

Population Demographics

	1990 Census	2000 Census	2008 Estimate	2013 Projection	Percent Change	
					1990 to 2000	2008 to 2013
Total Population	36,957	39,189	38,373	37,635	6.0%	-1.9%
Population Density (Pop/Sq Mi)	87.35	92.63	90.70	88.95	6.0%	-1.9%
Total Households	13,807	15,105	15,898	16,269	9.4%	2.3%

Population by Gender:

Male	18,147	49.1%	19,467	49.7%	19,196	50.0%	18,923	50.3%	7.3%	-1.4%
Female	18,809	50.9%	19,723	50.3%	19,178	50.0%	18,713	49.7%	4.9%	-2.4%

Population by Age

	1990		2000		2008		2013		Percent Change	
	Census	%	Census	%	Estimate	%	Projection	%	1990 to 2000	2008 to 2013
0 to 4	2,768	7.5%	2,515	6.4%	2,371	6.2%	2,438	6.5%	-9.1%	2.8%
5 to 14	5,984	16.2%	5,836	14.9%	4,876	12.7%	4,524	12.0%	-2.5%	-7.2%
15 to 19	2,674	7.2%	2,973	7.6%	2,594	6.8%	2,435	6.5%	11.2%	-6.1%
20 to 24	2,196	5.9%	2,208	5.6%	2,407	6.3%	2,501	6.6%	0.5%	3.9%
25 to 34	6,007	16.3%	4,949	12.6%	5,126	13.4%	4,858	12.9%	-17.6%	-5.2%
35 to 44	5,330	14.4%	6,290	16.1%	4,891	12.7%	4,595	12.2%	18.0%	-6.1%
45 to 54	3,814	10.3%	5,265	13.4%	5,926	15.4%	5,273	14.0%	38.0%	-11.0%
55 to 64	3,120	8.4%	3,714	9.5%	4,445	11.6%	5,074	13.5%	19.0%	14.2%
65 to 74	2,834	7.7%	2,684	6.9%	2,885	7.5%	3,221	8.6%	-5.3%	11.6%
75 to 84	1,618	4.4%	2,022	5.2%	1,925	5.0%	1,886	5.0%	25.0%	-2.0%
85+	611	1.7%	732	1.9%	925	2.4%	825	2.2%	19.8%	-10.8%

Median Age:

Total Population	33.2	36.9	38.9	39.3
------------------	------	------	------	------

Households by Income

	1990		2000		2008		2013		Percent Change	
	Census	%	Census	%	Estimate	%	Projection	%	1990 to 2000	2008 to 2013
\$0 - \$15,000	2,991	21.7%	1,865	12.3%	1,414	8.9%	1,263	7.8%	-37.6%	-10.7%
\$15,000 - \$24,999	2,794	20.2%	2,165	14.3%	1,684	10.6%	1,424	8.8%	-22.5%	-15.4%
\$25,000 - \$34,999	2,844	20.6%	2,268	15.0%	2,022	12.7%	1,845	11.3%	-20.3%	-8.8%
\$35,000 - \$49,999	3,034	22.0%	3,187	21.1%	2,836	17.8%	2,673	16.4%	5.0%	-5.7%
\$50,000 - \$74,999	1,593	11.5%	3,559	23.6%	4,031	25.4%	4,085	25.1%	258.0%	1.3%
\$75,000 - \$99,999	267	1.9%	1,359	9.0%	2,122	13.4%	2,436	15.0%	409.0%	14.8%
\$100,000 - \$149,999	161	1.2%	470	3.1%	1,347	8.5%	1,908	11.7%	191.9%	41.6%
\$150,000 +	108	0.8%	232	1.5%	442	2.8%	635	3.9%	114.8%	43.7%
Average Hhld Income	\$33,183		\$46,898		\$54,626		\$59,973		41.3%	9.8%
Median Hhld Income	\$28,356		\$40,849		\$49,963		\$55,204		44.1%	10.5%
Per Capita Income	\$12,443		\$18,076		\$23,518		\$26,885		45.3%	14.3%

Labor Force Status

Percent Change

	1990 Census		2000 Census		2008 Estimate		2013 Projection		1990 to 2000	2008 to 2013
Age 16 + Population	27,631		30,148		30,611		30,191		9.1%	-1.4%
In Labor Force	19,290	69.8%	20,768	68.9%	21,114	69.0%	20,802	68.9%	7.7%	-1.5%
Employed	18,147	94.1%	20,053	96.6%	20,366	66.5%	20,062	66.5%	10.5%	-1.5%
Unemployed	1,131	5.9%	707	3.4%	740	2.4%	732	2.4%	-37.5%	-1.1%
In Armed Forces	14	0.1%	8	0.0%	8	0.0%	8	0.0%	-42.9%	0.0%
Not In Labor Force	8,341	30.2%	9,380	31.1%	9,497	31.0%	9,389	31.1%	12.5%	-1.1%
Number of Employees (Daytime Pop)					20,130					
Number of Establishments					1,496					

Educational Attainment

	1990		2000		2008		2013		Percent Change	
	Census	%	Census	%	Estimate	%	Projection	%	1990 to 2000	2008 to 2013
Grade K - 8	1,672	7.2%	945	3.7%	1,010	3.9%	940	3.7%	-43.5%	-6.9%
Grade 9 - 12	3,918	16.8%	3,291	12.8%	3,197	12.2%	3,033	11.8%	-16.0%	-5.1%
High School Graduate	11,227	48.1%	12,481	48.7%	12,780	48.9%	12,680	49.3%	11.2%	-0.8%
Some College, No Degree	3,139	13.5%	4,622	18.0%	4,731	18.1%	4,675	18.2%	47.2%	-1.2%
Associates Degree	1,288	5.5%	1,463	5.7%	1,546	5.9%	1,560	6.1%	13.6%	0.9%
Bachelor's Degree	1,455	6.2%	1,846	7.2%	1,916	7.3%	1,907	7.4%	26.9%	-0.5%
Graduate Degree	632	2.7%	900	3.5%	943	3.6%	937	3.6%	42.4%	-0.6%
No Schooling Completed			108	0.4%						
Age 25+ Population	23,335		25,657		26,124		25,733		10.0%	-17.3%

(C) 2008 Applied Geographic Solutions, Inc. All Rights Reserved, SRC, LLC.
(C) 2008 SRC, LLC

Material on this website is protected by copyright and trademark laws. The information contained in this website or linked sites is provided on an "as is" basis. We make no guarantee or representation about the accuracy or completeness of the information, and disclaim all warranties, express or implied, including but not limited to warranties of merchantability, fitness for a particular purpose and non-infringement. We are not responsible for any damages arising from the use of information on this site. It is your responsibility to independently investigate the information's accuracy and completeness, and to determine to your satisfaction the suitability of the property for your needs. Any projections, opinions, assumptions or estimates used are for example only and do not represent the current or future performance of any property.